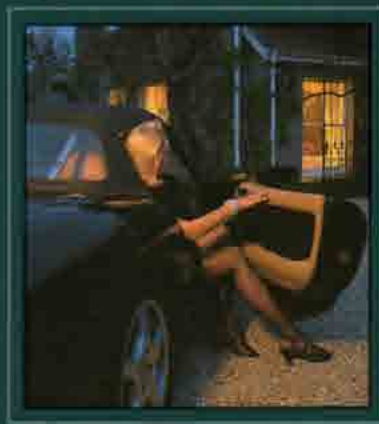


(((AE)))
ACOUSTIC ENERGY



the affair...



REFERENCE &
SIGNATURE SERIES

...in your dreams and reflections of life's experiences there remains
but one pure affair, an affair of the heart, the mind, and the soul,
an ultimate passion that surpasses all others.



A TRADITION OF EXCELLENCE

You'll find the seductive powers of Acoustic Energy loudspeakers, highly intoxicating - as indeed have the audio industry and hi-fi press. The purity of sound inherent in all AE loudspeakers has already enabled AE to achieve worldwide acclaim.

Now with significant technological advances and the launch of our new AES flagship AE has once again raised the threshold of sonic performance.



Acoustic Energy Limited was founded in 1987 and originally based in West London. The primary objective was to develop our proprietary metal-cone technology, which was first introduced to the audio industry with spectacular success in the company's first loudspeaker, the Reference Series AE1, early in 1988. This inaugural product was designed to offer great accuracy, superb and precise stereo imaging, dynamics and transparency - coupled with high power-handling and linearity. Metal-cone technology also featured in the company's second success story, the Reference Series AE2 - a larger version of the AE1 featuring twin bass mid-drivers. Initially the AE1 and AE2 were designed to satisfy the needs of the professional audio sector and have acquired a global reputation with musicians, recording artists and studio engineers. However, audiophiles were quick to discover the Reference Series and subsequently the hi-fi market rapidly became an integral part of Acoustic Energy's growth.

From its inception the Reference Series has been recognised as a benchmark in the audio industry and has received universal awards and accolades from federations and hi-fi press throughout the world.

Metal cones used in moving coil transducer bass unit design, provide exceptional clarity and power handling. Differing from conventional paper or plastic cones, they are extremely rigid and therefore able to accurately track the amplified signal without distortion. Their unique design also ensures that the limiting 'thermal compression' effects of temperature rise in the voice coil are eliminated.

Painstaking attention to detail in the design and construction of cabinets, crossovers, baffles and dedicated stands ensure that our unique drive units are able to faithfully reproduce even the most complex and dynamic musical programme. The combination of high technology and superb British craftsmanship, creates a unique and sophisticated blend of performance and style.

Our philosophy is simple - *"To employ the latest technology wisely and in a thorough and elegant manner, with one objective in mind - to accurately transfer the amplified signal into audible energy - of exceptional quality"*.



An affair of the soul...

REFERENCE SERIES AE1 & AE2 SERIES II

In the relentless pursuit of excellence, the AE1 and AE2 Series II have been acoustically re-engineered with no-compromise design objectives and the latest technical advances. The result is the attainment of new standards in performance and quality.

AE1 SERIES II

New developments already proven in the AE1 Signature have now been applied to the AE1 Series II. Unrivalled in its class the AE1 is renowned for superb bass, speed and dynamics. Series II retains these qualities and provides greater clarity, transparency and harmonic timbre, coupled with a larger stereo sound stage and increased sensitivity.

Critical matching of the voice coil and metal-cone have improved the mid-range, allowing for a much simpler, short path crossover network achieving gentle first order acoustic slopes and a seamless blend between the drivers.

The crossover features upgrades to the internal wiring, which is Teflon™ insulated twisted-pair silver-plated OFC (oxygen free copper). Industrial grade encapsulation is also applied to the total crossover assembly eliminating resonance, microphony and increasing power handling.



AE2 SERIES II

The AE2 Series II also employs much of the Signature Series 'know how'. Superior electrical components and full encapsulation of the crossover, both play their part. The new AE Teflon™ insulated internal wiring and the first order crossover alignment provides greater clarity and dynamics. Additionally, optimum bracing between the drive units has increased transient definition beyond current standards.

These evolutionary improvements ensure that the AE1 and AE2 Series II will maintain their market status as true 'Reference' loudspeakers, and will continue to provide performance levels comparable with far larger loudspeaker systems.

REFERENCE SERIES STANDS

To achieve the best musical performance from AE loudspeakers, it is highly recommended that dedicated stands are used. The STAE1 and STAE2 are ultra-rigid mass loaded alloy stands and feature single or twin fluted tubular alloy columns, die cast top and base supports, with 8mm high-tensile floor spikes. Finished in black, semi-matt stove enamel.

WHAT THE PRESS SAID

"The AE1 is without doubt a wholly remarkable loudspeaker, and a stunning endorsement of the well developed metal cone bass unit... To the author's knowledge, the most awesomely dynamic and articulate miniature ever made"
HI-FI CHOICE, June 1988

"The AE1 has an 88dB/W sensitivity, and is designed to handle - and I mean handle - something like 200W. But those are just numbers - the reality is quite extraordinary"
ALVIN GOLD, STEREOPHILE, August 1988

"As far as I'm concerned, the AE1 redefines the art of miniature speaker design"
JOHN ATKINSON, STEREOPHILE, September 1988

"The combination of an almost uniquely inert enclosure and the metal cone bass unit produces a sound of exquisite transparency. The winning slot was easy to fill. The AE1 comes closer to embodying the secret fantasies of all buyers of small speakers than any other"
WHAT HI-FI?, SUPERTEST, May 1991

"...listening (to the AE2) with the lights off to natural organ recordings, the subjective bass extension seemed so good that when I turned the lights on, it came as a rude shock to be reminded how small the speakers really are... superb presentation of detail and dynamic impact, coupled with a smooth uncoloured treble, the AE2 must be considered as one of the finest speakers in this price class"
JOHN ATKINSON, STEREOPHILE, February 1990

AE5

REFERENCE SERIES

Following several years of research, development and testing the Reference Series has undergone further enhancement with the introduction of the flagship AE5, a free space, floor standing 4-way loudspeaker. The AE5 uses the proven technology of the Reference Series coupled with significant new developments.

Utilizing no less than seven drive units housed within a precision milled alloy front baffle - the AE5 features four 130mm metal-cone bass units (2 lower and 2 upper bass units), two 130mm metal-cone mid-range units and one 25mm HF tweeter which is directly coupled to the alloy front

baffle. A true 4-way design, the AE5 can also benefit from being tri-wired to the heavy duty gold-plated binding posts.

The cabinet is a multiple-braced, resonance controlled construction, housing multiple separated chambers which are reflex loaded for the lower and upper bass units.

250 watts of power handling, a mid range performance unequalled in it's class and a rosewood veneer cabinet enclosure of the highest craftsmanship quality, contribute to the creation of a sophisticated, full-range loudspeaker of breathtaking sonic ability.



SIGNATURE SERIES

AE1 & AE2

Signature Series loudspeakers represent the ultimate expression of technical and musical excellence, a sophisticated blend of performance and beauty, embodied in special edition versions of the highly renowned AE1 and AE2.

How do they differ? The Signature Series crossover networks utilise premium grade 630v polypropylene capacitors, vitreous enamelled wire wound resistors, zero-tolerance air-core inductors and 99.99% pure silver Teflon™ insulated internal wiring to the drive units. The entire network is encased in a high-strength resin compound which maximises power handling and eliminates resonance from individual components.

All Signature Series metal-cone drive unit components are selected and matched to zero-tolerance limits both mechanically and cosmetically. In addition, the selection of drive unit and crossover components guarantees pair matching of left and right speakers which is within a tolerance of less than +/- 1/4dB.

Signature Series cabinets are also finished in selected and pair matched exotic real wood veneers which are

then sealed and hand polished with a high gloss lacquer compound. Internally the cabinets are lined with a unique sound absorbent material which is bonded to the cabinet walls and virtually eliminates enclosure resonance.

Each Piano Rosewood or Piano Black cabinet is fitted with a Sterling silver name plate which bears the serial number and is individually hallmarked.



...no compromise

"...the AE2 can therefore be confidently recommended. It's not only good, it's also more nearly all things to all men than any other loudspeaker I have yet encountered"

HI-FI CHOICE, January 1989

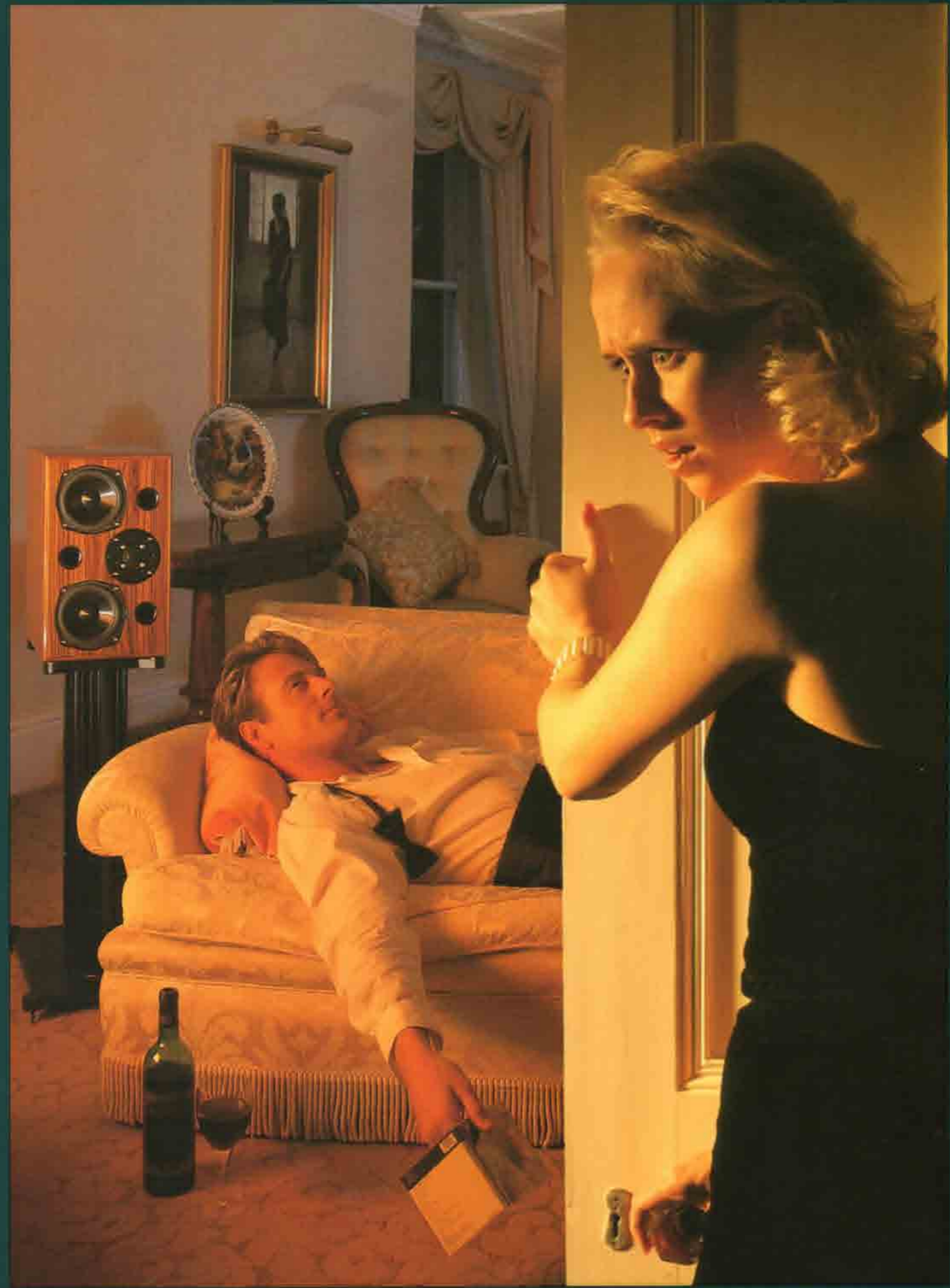
"The AE1 Signature has all the hallmarks of a classic miniature, plus the build and stamina of a thoroughbred. And like a thoroughbred it needs mastering, in this case by an amplifier that will control its prodigious bandwidth as well as supplying its power hungry needs. Satisfy these demands and you have a small and perfectly crafted pair of transducers that make music stunning"

HI-FI NEWS & RECORD REVIEW, December 1994

"Which brings me to the area where the Acoustic Energy beats out every mini-monitor I've heard: dynamics. Whether it was on the macro level or on the micro, the '2 Signature reinforced the musical message by allowing you to hear what was happening, free from strain or compression."

"...it is both a superb-sounding loudspeaker and a superb-looking piece of furniture"

JOHN ATKINSON, STEREOPHILE, November 1995



One affair worth having...

SPECIFICATIONS

	AE1 SERIES II	AE2 SERIES II	AE5	AE1 SIGNATURE SERIES	AE2 SIGNATURE SERIES
HF Units	25mm magnesium alloy dome, ferrofluid cooled and damped	25mm magnesium alloy dome, ferrofluid cooled and damped	25mm magnesium alloy dome, ferrofluid cooled and damped Directly coupled to front baffle	25mm magnesium alloy dome, ferrofluid cooled and damped	25mm magnesium alloy dome, ferrofluid cooled and damped
MF/LF Unit	90mm tri-layer alloy diaphragm thermally bonded to 32mm edge-wound ribbon voice-coil	Two 90mm tri-layer diaphragms thermally bonded to 32mm edge-wound ribbon voice-coils	Four bass units Two mid-range units All 90mm tri-layer alloy diaphragms thermally bonded to 32mm edge-wound ribbon voice-coils	90mm tri-layer alloy diaphragm thermally bonded to 32mm edge-wound ribbon voice-coil	Two 90mm tri-layer alloy diaphragms thermally bonded to 32mm edge-wound ribbon voice-coils
Power Handling	For use with amplifiers up to 200 watts	For use with amplifiers up to 250 watts	For use with amplifiers up to 250 watts	For use with amplifiers up to 200 watts	For use with amplifiers up to 250 watts
Frequency Response	65Hz - 22kHz (+/-3dB)	50Hz - 17kHz (+/-2.5dB)	35Hz - 25kHz (+/-2dB)	65Hz - 22kHz (+/-2dB)	50Hz - 17kHz (+/-1.5dB)
Sensitivity	89 dB	90 dB	91 dB	88 dB	90 dB
Impedance	Typically 8 ohm	Typically 6 ohm	Typically 6 ohm	Typically 8 ohm	Typically 6 ohm
Cabinet	Satin Black Santos Rosewood Piano Black	Satin Black Santos Rosewood Piano Black	Santos Rosewood Piano Black	Piano Santos Rosewood Piano Black	Piano Santos Rosewood Piano Black
Connections	Gold-plated binding posts, Bi-wireable	Gold-plated binding posts, Bi-wireable	Gold-plated binding posts, Tri-wireable	Gold-plated binding posts, Bi-wireable	Gold-plated binding posts, Bi-wireable
Dimensions (WxHxD)	180 x 295 x 255mm	235 x 385 x 330mm	220 x 1100 x 340mm	180 x 295 x 255mm	235 x 385 x 330mm
Weight (excl packaging)	8kg per speaker	17kg per speaker	43kg per speaker	12kg per speaker	23kg per speaker



Acoustic Energy UK headquarters - a 15,000sq ft (1,400sq m) office, production and distribution centre within the picturesque Cotswolds in Gloucestershire 100 miles (160km) west of London.

Distributor/Dealer



ACOUSTIC ENERGY LIMITED
16 Bridge Road, Cirencester
Gloucestershire, England GL7 1NJ

Telephone: +44 (0)1285 654432

Facsimile: +44 (0)1285 654430

Web site: www.acoustic-energy.co.uk